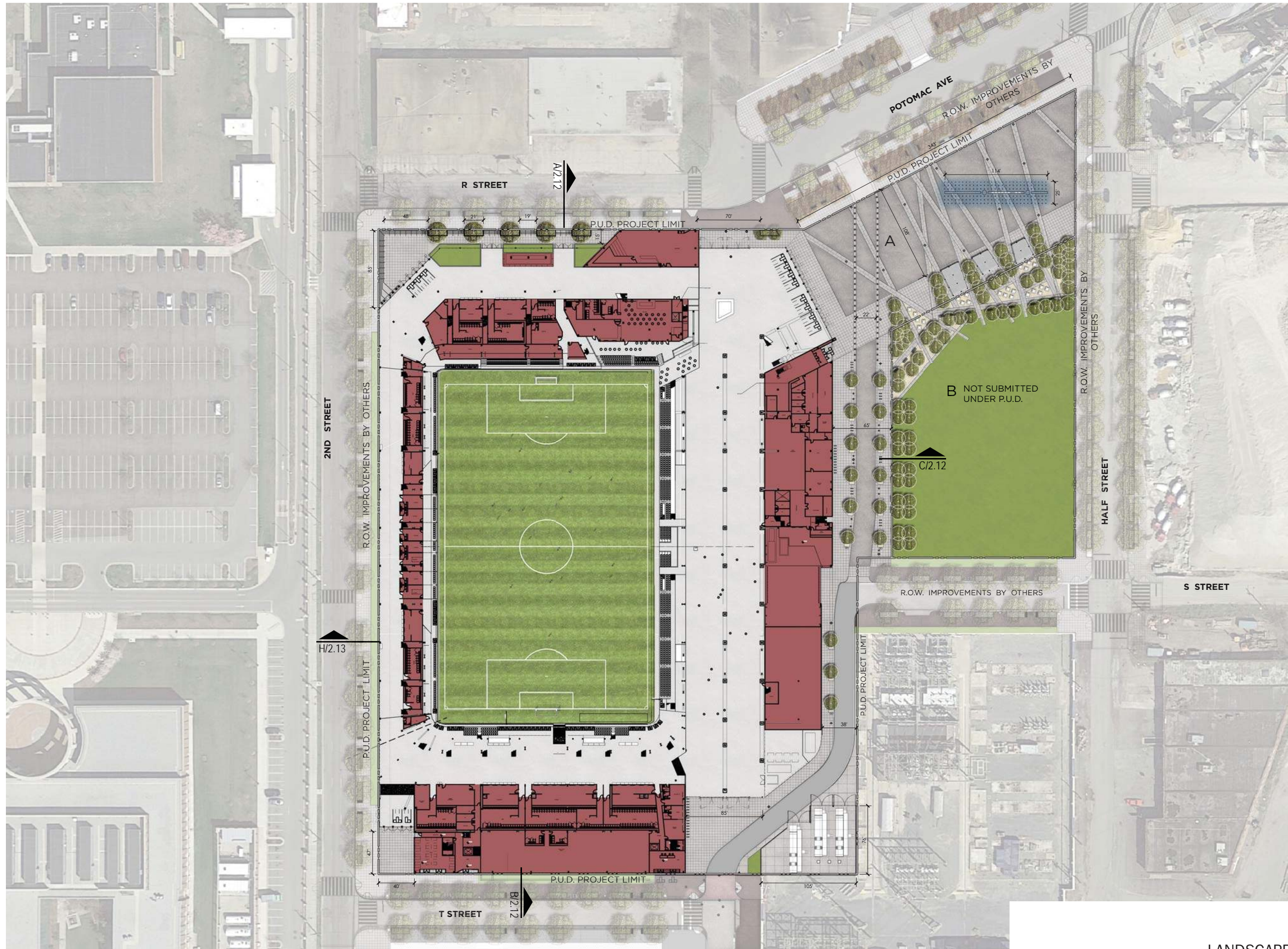


HARDSCAPE
LANDSCAPE



LEGEND

- 5' x 10' GRAY BRICK PAVERS
- 3' x 6' GRAY PRECAST CONCRETE PAVERS
- 3' x 3' GRAY C.I.P. CONCRETE PAVEMENT
- TURF
- DECOMPOSED GRANITE
- DECIDUOUS SHADE TREE
- ORNAMENTAL TREE
- PEDESTRIAN LIGHT TO MATCH R.O.W. IMPROVEMENTS
- PARCEL B - NOT PART OF STADIUM P.U.D. SUBMISSION, DESIGN INTENT SHOWN FOR REFERENCE ONLY
- R.O.W. IMPROVEMENTS - NOT PART OF P.U.D. SUBMISSION, DESIGN INTENT SHOWN FOR REFERENCE ONLY
- DISTRICT OF COLUMBIA RESPONSIBLE FOR DESIGN OF R.O.W. IMPROVEMENTS
- PLAZA TABLES/ CHAIRS
- BENCH

NOTES

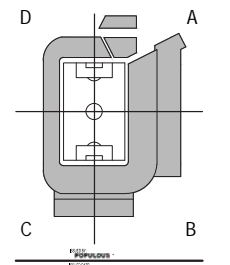
1. STREETScape MATERIALS/DETAILS ARE SHOWN IN CONCEPT FOR ILLUSTRATIVE PURPOSES. THE FINAL MATERIALS OF THE SITE STADIUM IMPROVEMENTS WILL BE SELECTED DURING DETAILED DESIGN PHASES OF WORK AND CONFORM WITH APPLICABLE DESIGN AND PERMITTING STANDARDS.
2. PLANT SPECIES SELECTIONS IDENTIFIED ON THE PLANS/SCHEDULES ARE SHOWN TO ILLUSTRATE DESIGN INTENT ONLY. THE PURPOSE IS TO GENERALLY DEFINE PLANT SIZE, CHARACTER, AND LOCATIONS. REFINEMENTS TO THE PLANTING DESIGN AND FINAL SELECTION OF ALL PLANT MATERIALS CONSISTENT WITH THE SPECIES SHOWN SHALL BE DEVELOPED DURING DETAILED DESIGN PHASES OF WORK.
3. ALL R.O.W. IMPROVEMENTS ARE SHOWN FOR ILLUSTRATIVE PURPOSES AND ARE BY OTHERS.
4. BUILDING LAYOUTS ARE ILLUSTRATIVE ONLY AND SUBJECT TO CHANGE ON FINAL PLAN.

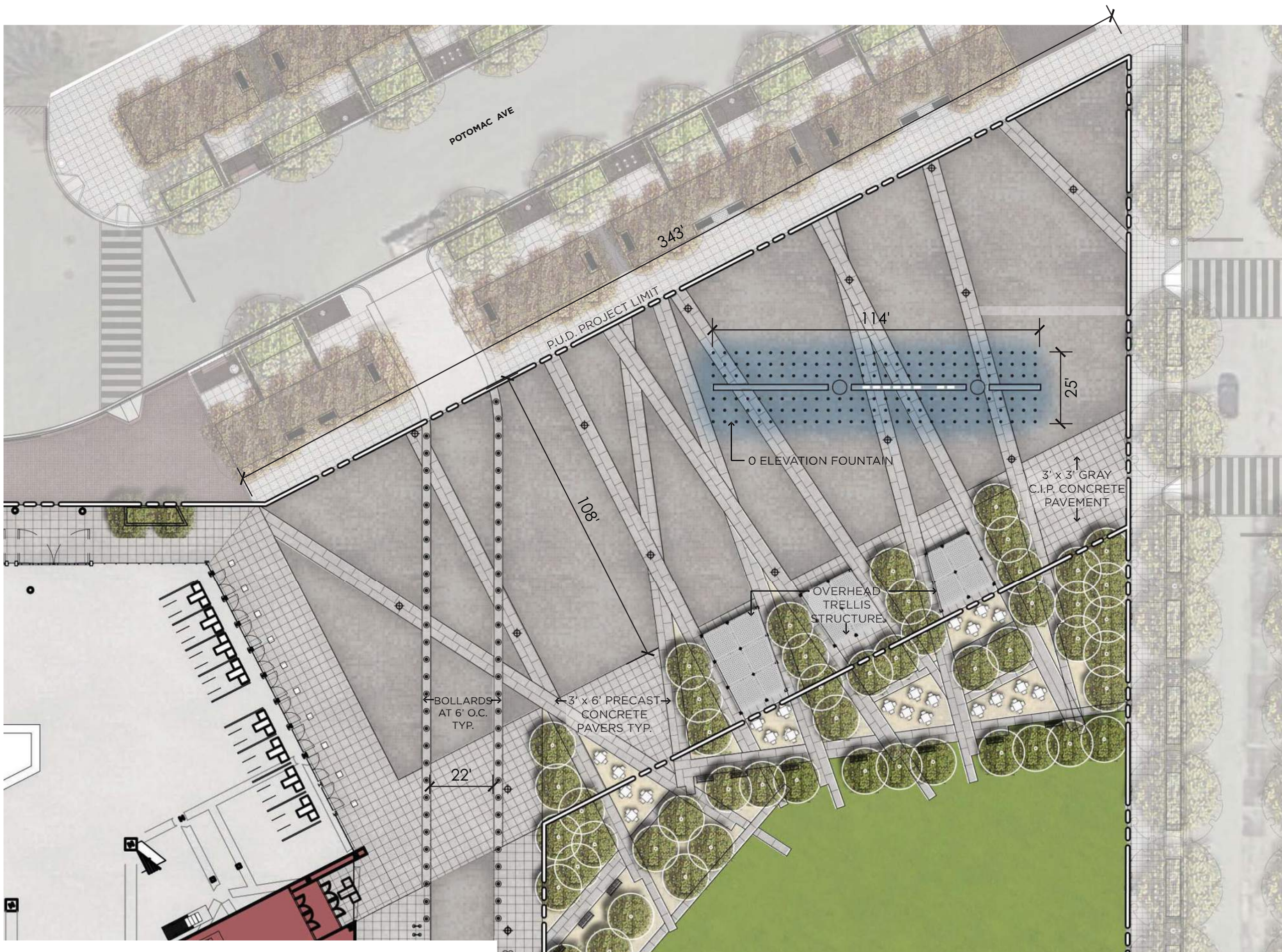
POPULOUS
Marshall | Moya Design



DC UNITED SOCCER STADIUM
100 Potomac Avenue, SW
Washington, DC 20024

P.U.D. #2 SUBMISSION





LEGEND

- 5' x 10' GRAY BRICK PAVERS
- 3' x 6' GRAY PRECAST CONCRETE PAVERS
- 3' x 3' GRAY C.I.P. CONCRETE PAVEMENT
- TURF
- DECOMPOSED GRANITE
- DECIDUOUS SHADE TREE
- ORNAMENTAL TREE
- PEDESTRIAN LIGHT TO MATCH R.O.W. IMPROVEMENTS
- PARCEL B - NOT PART OF STADIUM P.U.D. SUBMISSION, DESIGN INTENT SHOWN FOR REFERENCE ONLY
- R.O.W. IMPROVEMENTS - NOT PART OF P.U.D. SUBMISSION, DESIGN INTENT SHOWN FOR REFERENCE ONLY
- DISTRICT OF COLUMBIA RESPONSIBLE FOR DESIGN OF R.O.W. IMPROVEMENTS
- PLAZA TABLES/ CHAIRS
- BENCH

NOTES

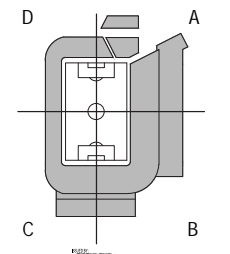
1. STREETScape MATERIALS/DETAILS ARE SHOWN IN CONCEPT FOR ILLUSTRATIVE PURPOSES. THE FINAL MATERIALS OF THE SITE STADIUM IMPROVEMENTS WILL BE SELECTED DURING DETAILED DESIGN PHASES OF WORK AND CONFORM WITH APPLICABLE DESIGN AND PERMITTING STANDARDS.
2. PLANT SPECIES SELECTIONS IDENTIFIED ON THE PLANS/SCHEDULES ARE SHOWN TO ILLUSTRATE DESIGN INTENT ONLY. THE PURPOSE IS TO GENERALLY DEFINE PLANT SIZE, CHARACTER, AND LOCATIONS. REFINEMENTS TO THE PLANTING DESIGN AND FINAL SELECTION OF ALL PLANT MATERIALS CONSISTENT WITH THE SPECIES SHOWN SHALL BE DEVELOPED DURING DETAILED DESIGN PHASES OF WORK.
3. ALL R.O.W. IMPROVEMENTS ARE SHOWN FOR ILLUSTRATIVE PURPOSES AND ARE BY OTHERS.
4. BUILDING LAYOUTS ARE ILLUSTRATIVE ONLY AND SUBJECT TO CHANGE ON FINAL PLAN.

POPULOUS
Marshall | Moya Design

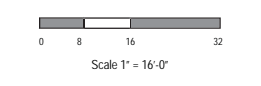


DC UNITED SOCCER STADIUM
100 Potomac Avenue, SW
Washington, DC 20024

P.U.D. #2 SUBMISSION



PROJECT NORTH
LANDSCAPE / HARDSCAPE PLAN
ENLARGEMENT



6.13 ENLARGED PLAZA LANDSCAPE / HARDSCAPE PLAN

BOTANICAL NAME	COMMON NAME	QTY	SIZE	ROOT	SPACING
<i>Platanus x acerifolia 'Bloodgold'</i>	London Planetree	5	3" cal.	B&B	Per Plan
<i>Cercis canadensis</i>	Eastern Redbud	11	3" cal.	B&B	Per Plan
<i>Liriope muscari 'Big Blue'</i>	Big Blue Liriope	400	1 quart	Cont.	12"

H PLANTING SCHEDULE



G EASTERN REDBUD



E TABLE AND CHAIRS



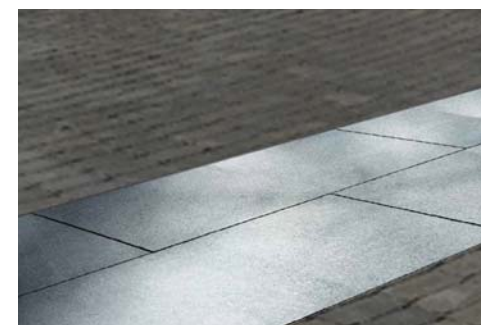
D 0 ELEVATION FOUNTAIN



F LONDON PLANETREE 'BLOODGOOD'



C GRAY BRICK PAVERS
 TO MATCH R.O.W. IMPROVEMENTS
 DESCRIPTION: PERMEABLE UNIT PAVERS
 COLOR: GRAY
 SUPPLIER: BORGERT
 SIZE: 5" x 10"



B 3' x 6' GRAY PRECAST CONCRETE PAVERS
 DESCRIPTION: PRECAST PANEL CONCRETE PAVERS
 COLOR: COLORED W/ CARBON POWDER
 FINISH: FINE HAIR BROOM FINISH
 SUPPLIER: PORTLAND CEMENT CONCRETE
 SIZE: 3' x 6' SCORING
 NOTES: DDOT STANDARD OR APPROVED EQUAL



A 3' x 3' GRAY SCORED CONCRETE C.I.P. PAVEMENT
 TO MATCH R.O.W. IMPROVEMENTS
 DESCRIPTION: CAST-IN-PLACE CONCRETE
 COLOR: COLORED W/ CARBON POWDER
 FINISH: FINE HAIR BROOM FINISH
 SUPPLIER: PORTLAND CEMENT CONCRETE
 SIZE: 3' x 3' SCORING
 NOTES: DDOT STANDARD OR APPROVED EQUAL

NOTES

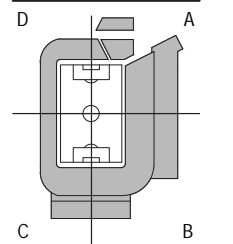
- STREETSCAPE MATERIALS/DETAILS ARE SHOWN IN CONCEPT FOR ILLUSTRATIVE PURPOSES. THE FINAL MATERIALS OF THE SITE STADIUM IMPROVEMENTS WILL BE SELECTED DURING DETAILED DESIGN PHASES OF WORK AND CONFORM WITH APPLICABLE DESIGN AND PERMITTING STANDARDS.
- PLANT SPECIES SELECTIONS IDENTIFIED ON THE PLANS/SCHEDULES ARE SHOWN TO ILLUSTRATE DESIGN INTENT ONLY. THE PURPOSE IS TO GENERALLY DEFINE PLANT SIZE, CHARACTER, AND LOCATIONS. REFINEMENTS TO THE PLANTING DESIGN AND FINAL SELECTION OF ALL PLANT MATERIALS CONSISTENT WITH THE SPECIES SHOWN SHALL BE DEVELOPED DURING DETAILED DESIGN PHASES OF WORK.
- ALL R.O.W. IMPROVEMENTS ARE SHOWN FOR ILLUSTRATIVE PURPOSES AND ARE BY OTHERS.
- BUILDING LAYOUTS ARE ILLUSTRATIVE ONLY AND SUBJECT TO CHANGE ON FINAL PLAN.

POPULOUS
 Marshall | Moya Design



DC UNITED SOCCER STADIUM
 100 Potomac Avenue, SW
 Washington, DC 20024

P.U.D. #2 SUBMISSION



MAIN ENTRY PLAZA IMAGES

D.C. UNITED PLAZA

CANOPY GARDEN

PUBLIC SEATING AND
WOOD TIMBER TRELLIS

DC UNITED SITE SIGN

7'6" X 32' LETTERS
S.S. LETTERS

PUBLIC SPLASH FOUNTAIN

FOUNTAIN TO BE TURNED
OFF ON MATCHDAY
FOR MATCHDAY PLAZA
ACTIVITIES

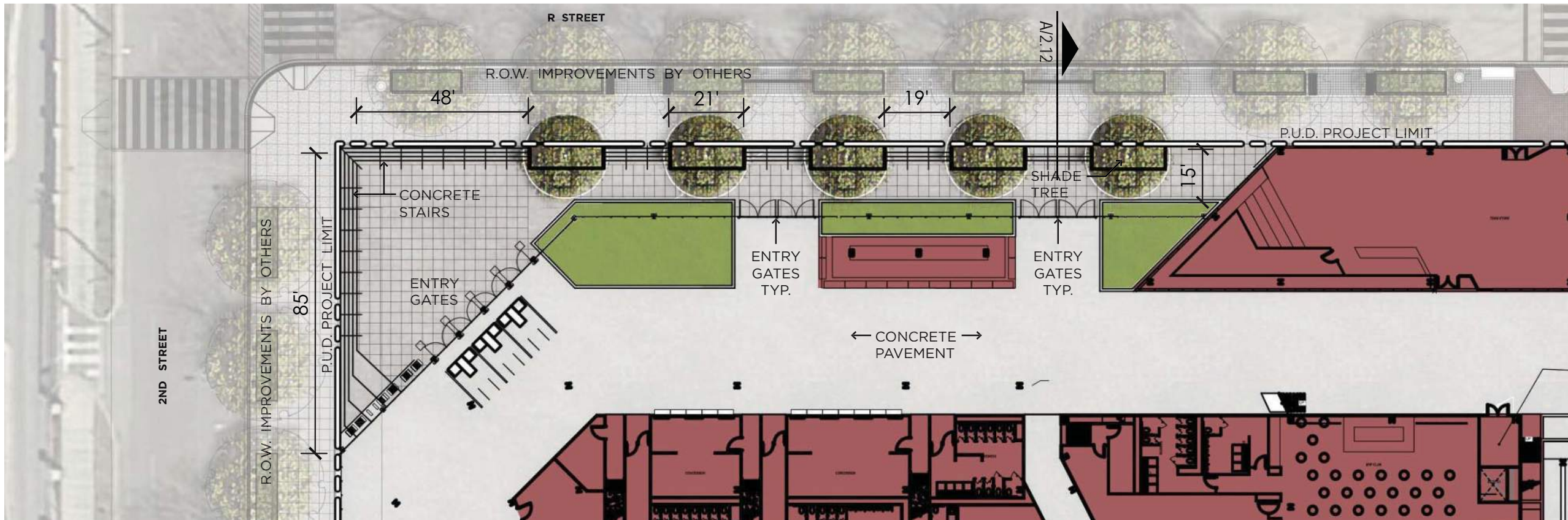


1ST STREET RE-ALIGNMENT

PEDESTRIAN FRIENDLY STREETScape FEATURES

BICYCLE PARKING &
SEATING ELEMENTS
INTEGRATED BETWEEN
PLANTING AND TREE
CANOPY ON BOTH SIDES
OF THE STREET





LEGEND

- 5' x 10' GRAY BRICK PAVERS
- 3' x 6' GRAY PRECAST CONCRETE PAVERS
- 3' x 3' GRAY C.I.P. CONCRETE PAVEMENT
- TURF
- DECOMPOSED GRANITE
- DECIDUOUS SHADE TREE
- ORNAMENTAL TREE
- PEDESTRIAN LIGHT TO MATCH R.O.W. IMPROVEMENTS
- PARCEL B - NOT PART OF STADIUM P.U.D. SUBMISSION, DESIGN INTENT SHOWN FOR REFERENCE ONLY
- R.O.W. IMPROVEMENTS - NOT PART OF P.U.D. SUBMISSION, DESIGN INTENT SHOWN FOR REFERENCE ONLY
- DISTRICT OF COLUMBIA RESPONSIBLE FOR DESIGN OF R.O.W. IMPROVEMENTS
- PLAZA TABLES/ CHAIRS
- BENCH

NOTES

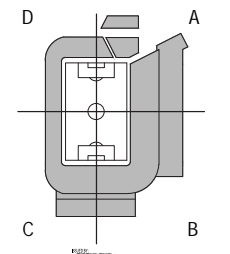
1. STREETSCAPE MATERIALS/DETAILS ARE SHOWN IN CONCEPT FOR ILLUSTRATIVE PURPOSES. THE FINAL MATERIALS OF THE SITE STADIUM IMPROVEMENTS WILL BE SELECTED DURING DETAILED DESIGN PHASES OF WORK AND CONFORM WITH APPLICABLE DESIGN AND PERMITTING STANDARDS.
2. PLANT SPECIES SELECTIONS IDENTIFIED ON THE PLANS/SCHEDULES ARE SHOWN TO ILLUSTRATE DESIGN INTENT ONLY. THE PURPOSE IS TO GENERALLY DEFINE PLANT SIZE, CHARACTER, AND LOCATIONS. REFINEMENTS TO THE PLANTING DESIGN AND FINAL SELECTION OF ALL PLANT MATERIALS CONSISTENT WITH THE SPECIES SHOWN SHALL BE DEVELOPED DURING DETAILED DESIGN PHASES OF WORK.
3. ALL R.O.W. IMPROVEMENTS ARE SHOWN FOR ILLUSTRATIVE PURPOSES AND ARE BY OTHERS.
4. BUILDING LAYOUTS ARE ILLUSTRATIVE ONLY AND SUBJECT TO CHANGE ON FINAL PLAN.

POPULOUS
Marshall | Moya Design

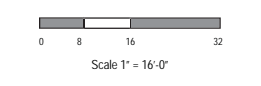


DC UNITED SOCCER STADIUM
100 Potomac Avenue, SW
Washington, DC 20024

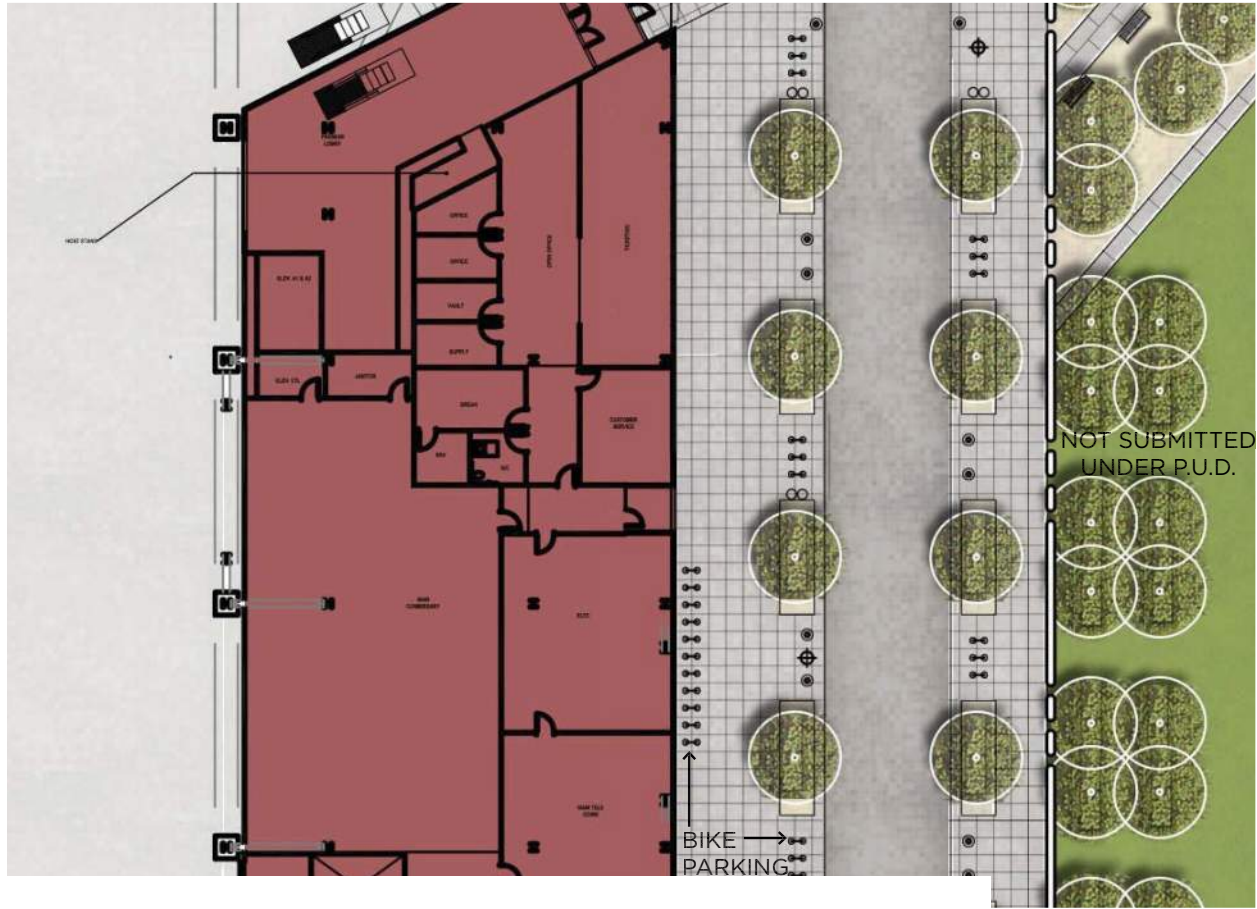
P.U.D. #2 SUBMISSION



PROJECT NORTH
LANDSCAPE / HARDSCAPE PLAN
ENLARGEMENT



B NORTHWEST PLAZA ENLARGEMENT
Scale 1"=16'



6.17 ENLARGED NORTH PLAZA & 1ST STREET
LANDSCAPE / HARDSCAPE PLANS





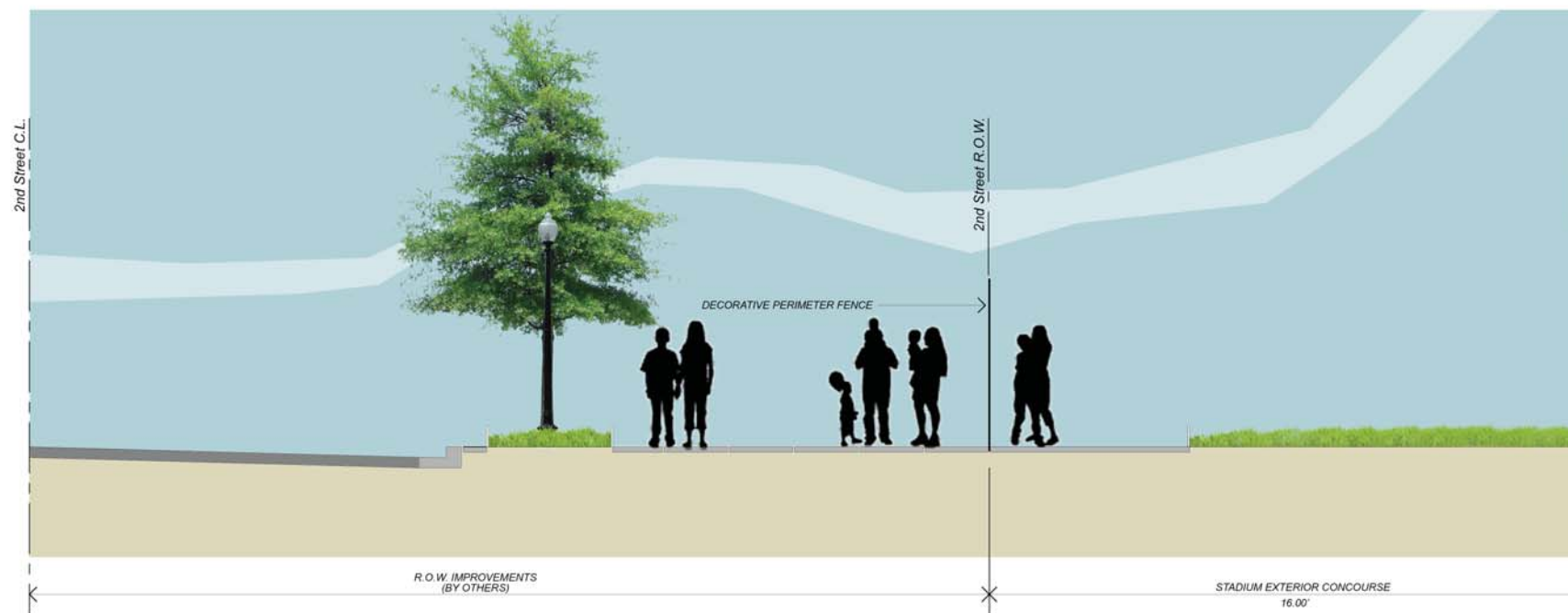
D BIKE RACKS
TO MATCH PUBLIC REALM SCOPE



C BENCHES
TO MATCH PUBLIC REALM SCOPE



B PEDESTRIAN LIGHT
TO MATCH R.O.W. IMPROVEMENTS



A 2nd STREET TO WEST STADIUM FACADE
Section Looking North

NOTES

1. STREETScape MATERIALS/DETAILS ARE SHOWN IN CONCEPT FOR ILLUSTRATIVE PURPOSES. THE FINAL MATERIALS OF THE SITE STADIUM IMPROVEMENTS WILL BE SELECTED DURING DETAILED DESIGN PHASES OF WORK AND CONFORM WITH APPLICABLE DESIGN AND PERMITTING STANDARDS.

2. PLANT SPECIES SELECTIONS IDENTIFIED ON THE PLANS/SCHEDULES ARE SHOWN TO ILLUSTRATE DESIGN INTENT ONLY. THE PURPOSE IS TO GENERALLY DEFINE PLANT SIZE, CHARACTER, AND LOCATIONS. REFINEMENTS TO THE PLANTING DESIGN AND FINAL SELECTION OF ALL PLANT MATERIALS CONSISTENT WITH THE SPECIES SHOWN SHALL BE DEVELOPED DURING DETAILED DESIGN PHASES OF WORK.

3. ALL R.O.W. IMPROVEMENTS ARE SHOWN FOR ILLUSTRATIVE PURPOSES AND ARE BY OTHERS.

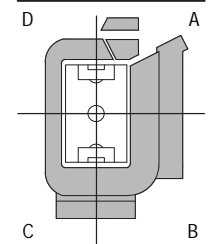
4. BUILDING LAYOUTS ARE ILLUSTRATIVE ONLY AND SUBJECT TO CHANGE ON FINAL PLAN.

POPULOUS
Marshall Moya Design

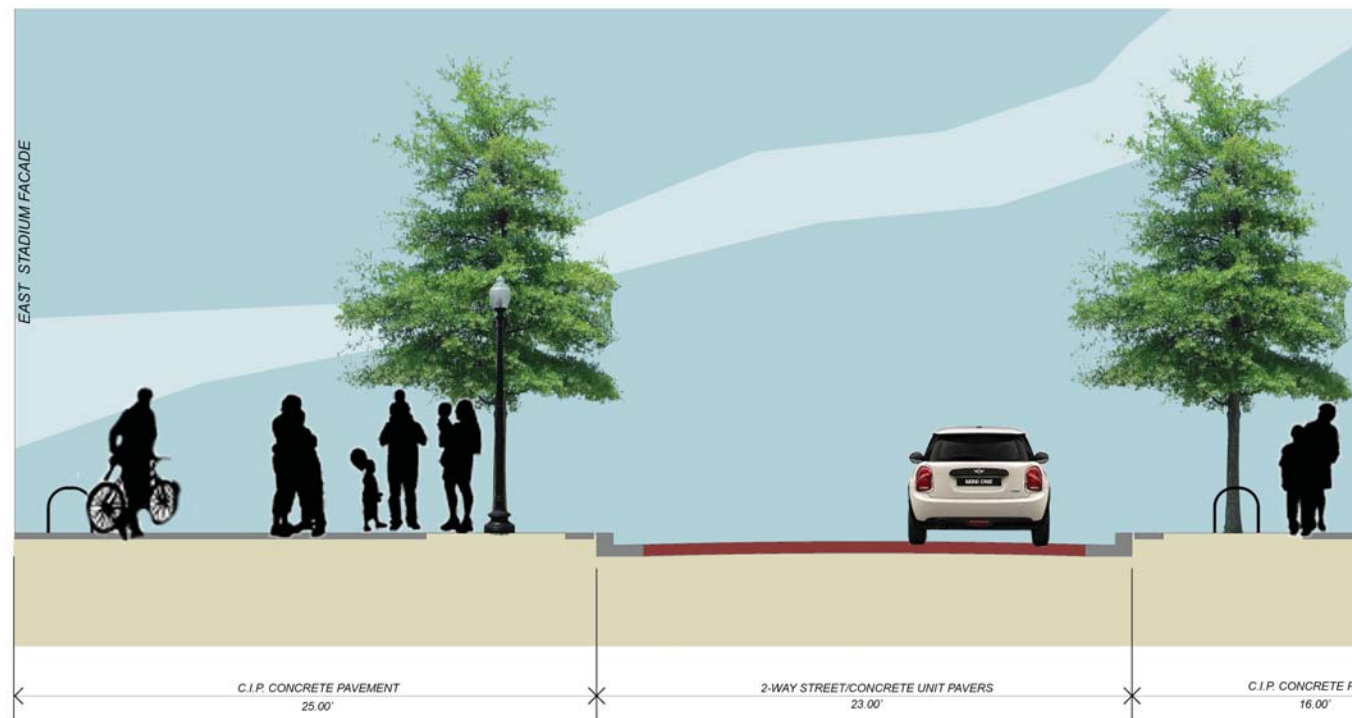


DC UNITED SOCCER STADIUM
100 Potomac Avenue, SW
Washington, DC 20024

P.U.D. #2 SUBMISSION



PROJECT NORTH
LANDSCAPE / HARDSCAPE
SITE SECTIONS & DETAILS



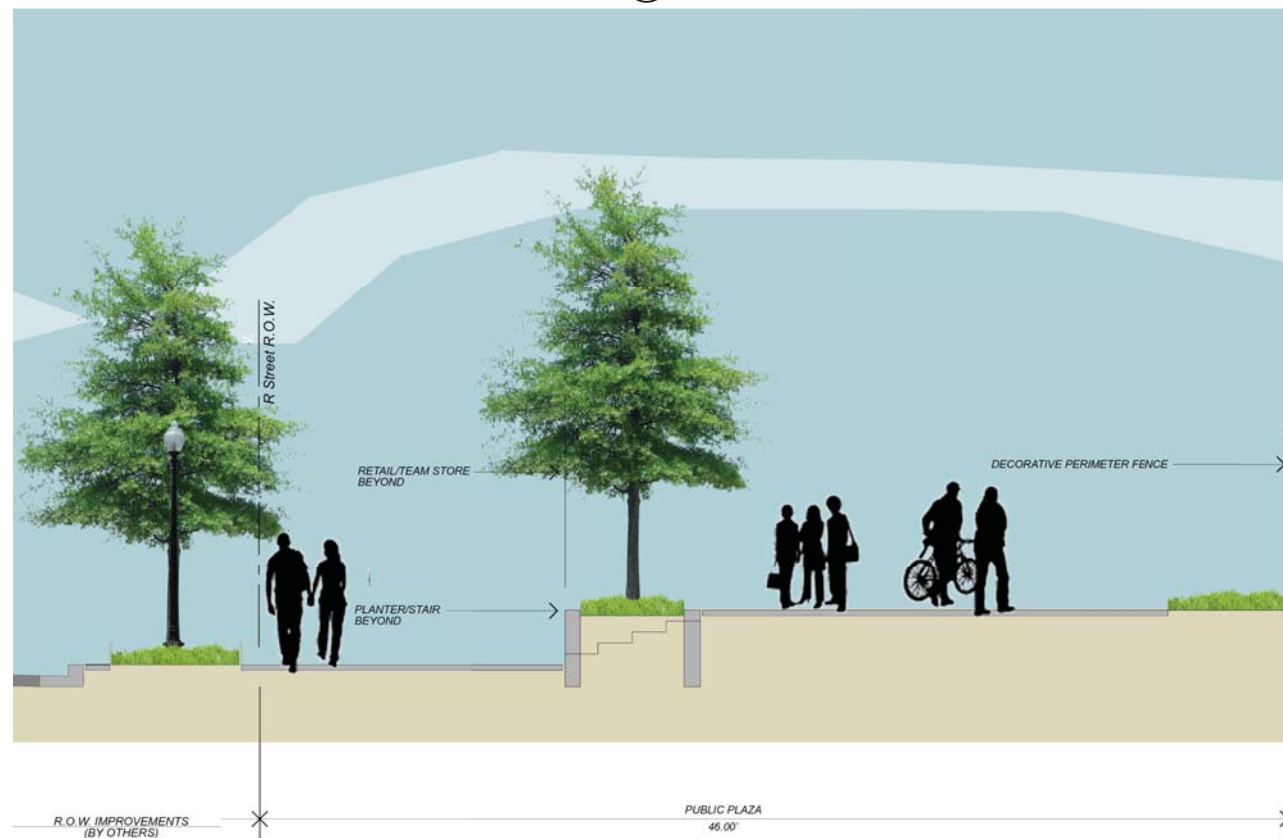
C PEDESTRIAN CONNECTION EAST SIDE OF STADIUM
Section Looking North



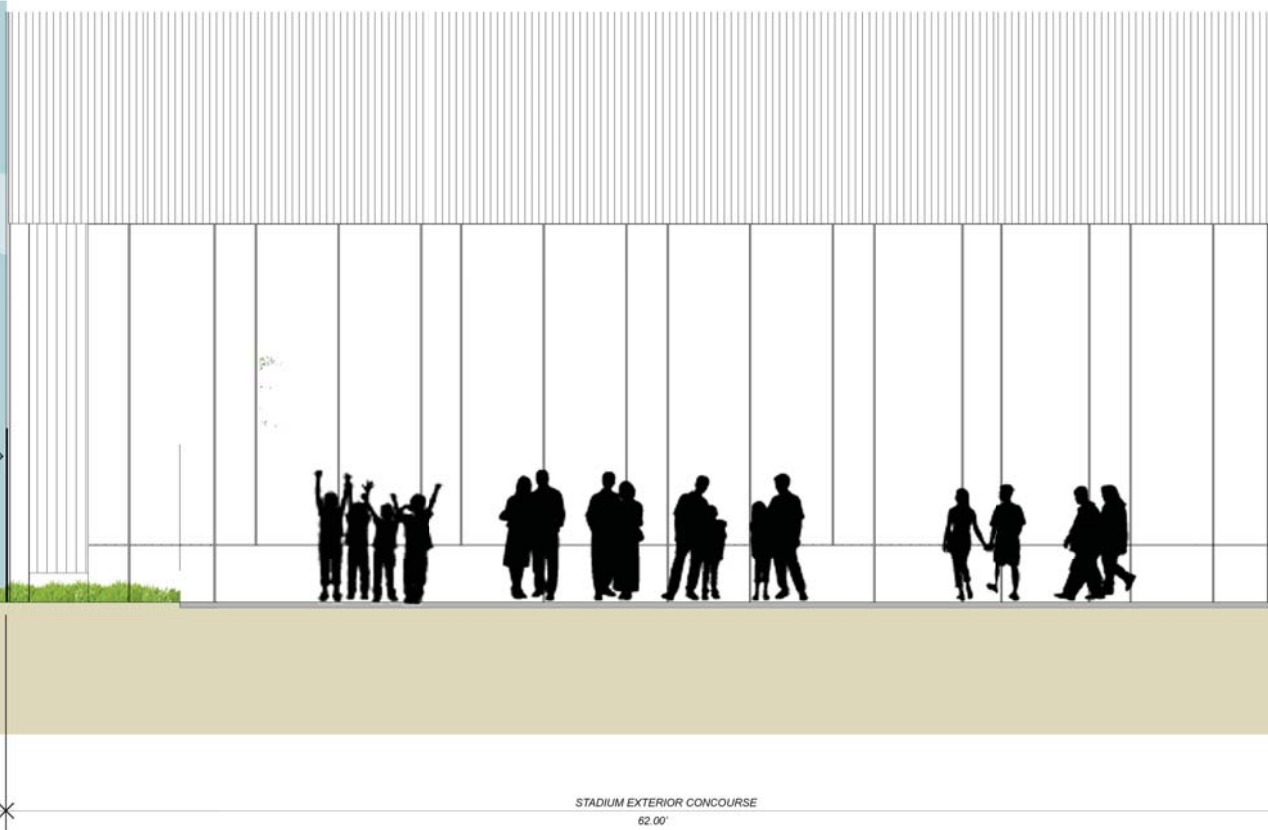
B T STREET TO SOUTH STADIUM FACADE
Section Looking East



D WEST STREET SECTION
1/4" = 1'-0"



B SOUTH STREET SECTION
1/4" = 1'-0"



A R STREET TO NORTH STADIUM FACADE
Section Looking East

NOTES

- STREETSCAPE MATERIALS/DETAILS ARE SHOWN IN CONCEPT FOR ILLUSTRATIVE PURPOSES. THE FINAL MATERIALS OF THE SITE STADIUM IMPROVEMENTS WILL BE SELECTED DURING DETAILED DESIGN PHASES OF WORK AND CONFORM WITH APPLICABLE DESIGN AND PERMITTING STANDARDS.
- PLANT SPECIES SELECTIONS IDENTIFIED ON THE PLANS/SCHEDULES ARE SHOWN TO ILLUSTRATE DESIGN INTENT ONLY. THE PURPOSE IS TO GENERALLY DEFINE PLANT SIZE, CHARACTER, AND LOCATIONS. REFINEMENTS TO THE PLANTING DESIGN AND FINAL SELECTION OF ALL PLANT MATERIALS CONSISTENT WITH THE SPECIES SHOWN SHALL BE DEVELOPED DURING DETAILED DESIGN PHASES OF WORK.
- ALL R.O.W. IMPROVEMENTS ARE SHOWN FOR ILLUSTRATIVE PURPOSES AND ARE BY OTHERS.
- BUILDING LAYOUTS ARE ILLUSTRATIVE ONLY AND SUBJECT TO CHANGE ON FINAL PLAN.

POPULOUS
Marshall | Moya Design



DC UNITED SOCCER STADIUM
100 Potomac Avenue, SW
Washington, DC 20024

P.U.D. #2 SUBMISSION

